

KITCHEN PROGRAM



Siberian Larch

5/8" Melamine Color Samples



Linen Texture



Brown Walnut



Dark Ash



Monarca

Retail 2020

Frameless Finished KITCHEN Cabinets		PB Case		PLY Case	
		Slab Door		Slab Door	
MODEL	DESCRIPTION	MF	Q1	MF_PLY	Q2
SB30	30" Sink Base	147.62		177.84	
SB33	33" Sink Base	161.02		193.57	
SB36	36" Sink Base	170.20		203.58	
SB42	42" Sink Base	183.40		219.55	
SB48	48" Sink Base	193.76		231.67	
B09	9" Base	123.27		143.38	
B12	12" Base	134.22		156.29	
B15	15" Base	142.56		166.59	
B18	18" Base	155.28		182.02	
B21	21" Base	161.25		188.44	
B24	24" Base	192.01		222.46	
B27	27" Base	203.56		237.09	
B30	30" Base	207.99		242.35	
B33	33" Base	227.93		266.50	
B36	36" Base	239.75		279.52	
DB12	12" Drawer Base	217.92		238.48	
DB15	15" Drawer Base	229.08		251.22	
DB18	18" Drawer Base	246.03		270.89	
DB24	24" Drawer Base	282.07		310.26	
DB30	30" Drawer Base	299.39		329.61	
DB2D24	24" Drawer Base 2Drw	323.76		351.95	
DB2D30	30" Drawer Base 2Drw	338.15		368.37	
W0930	9" x 30" Wall	58.95		71.34	
W1230	12" x 30" Wall	65.24		78.49	
W1530	15" x 30" Wall	70.59		85.44	
W1830	18" x 30" Wall	76.88		92.59	
W2130	21" x 30" Wall	82.11		99.40	
W2430	24" x 30" Wall	104.91		123.45	
W2730	27" x 30" Wall	116.31		137.75	
W3030	30" x 30" Wall	119.52		141.82	
W3330	33" x 30" Wall	129.00		152.52	
W3630	36" x 30" Wall	138.53		163.28	
W0936	9" x 36" Wall	66.05		78.39	
W1236	12" x 36" Wall	72.89		86.71	
W1536	15" x 36" Wall	81.27		96.94	
W1836	18" x 36" Wall	92.25		109.93	
W2136	21" x 36" Wall	96.60		115.54	
W2436	24" x 36" Wall	122.35		142.92	
W2736	27" x 36" Wall	136.28		159.55	
W3036	30" x 36" Wall	139.57		163.72	
W3336	33" x 36" Wall	158.24		185.24	
W3636	36" x 36" Wall	165.79		195.17	
W3936	39" x 36" Wall	173.35		205.11	
W0942	9" x 42" Wall	75.32		89.78	
W1242	12" x 42" Wall	84.01		100.51	
W1542	15" x 42" Wall	92.10		110.41	
W1842	18" x 42" Wall	103.51		124.07	
W2142	21" x 42" Wall	111.85		134.82	
W2442	24" x 42" Wall	137.47		161.72	
W2742	27" x 42" Wall	150.42		177.01	
W3042	30" x 42" Wall	158.04		187.04	
W3342	33" x 42" Wall	175.72		207.22	
W3642	36" x 42" Wall	182.28		215.81	
W3942	39" x 42" Wall	182.44		215.74	
BW2430	24" x 30" Blind Wall	108.65		128.31	
BW2730	27" x 30" Blind Wall	118.85		140.67	
BW3030	30" x 30" Blind Wall	128.10		151.90	
BW3330	33" x 30" Blind Wall	129.18		153.08	
BW3630	36" x 30" Blind Wall	162.78		187.16	
BW3930	39" x 30" Blind Wall	184.49		211.59	
BW2436	24" x 36" Blind Wall	139.88		163.83	
BW2736	27" x 36" Blind Wall	150.38		176.35	
BW3036	30" x 36" Blind Wall	160.07		188.73	
BW3336	33" x 36" Blind Wall	168.21		198.12	
BW3636	36" x 36" Blind Wall	225.42		257.81	
BW3936	39" x 36" Blind Wall	248.97		283.74	

Frameless Finished KITCHEN Cabinets		PB Case		PLY Case	
		Slab Door		Slab Door	
MODEL	DESCRIPTION	MF	Q1	MF_PLY	Q2
BW2442	24" x 42" Blind Wall	156.26		184.66	
BW2742	27" x 42" Blind Wall	165.06		195.11	
BW3042	30" x 42" Blind Wall	173.40		205.57	
BW3342	33" x 42" Blind Wall	185.16		219.96	
BW3642	36" x 42" Blind Wall	243.52		281.19	
BW3942	39" x 42" Blind Wall	269.79		310.25	
W3012	30" x 12" Wall	76.04		90.32	
W3015	30" x 15" Wall	81.91		97.12	
W3018	30" x 18" Wall	85.77		101.28	
W3021	30" x 21" Wall	92.47		109.09	
W3024	30" x 24" Wall	98.10		115.15	
W3027	30" x 27" Wall	103.39		121.25	
W3312	33" x 12" Wall	81.66		96.54	
W3315	33" x 15" Wall	87.53		103.45	
W3318	33" x 18" Wall	94.59		111.69	
W3321	33" x 21" Wall	99.75		117.27	
W3324	33" x 24" Wall	107.86		126.19	
W3327	33" x 27" Wall	113.86		133.30	
W3612	36" x 12" Wall	84.21		100.15	
W3615	36" x 15" Wall	91.62		108.86	
W3618	36" x 18" Wall	97.02		114.94	
W3621	36" x 21" Wall	102.18		120.53	
W3624	36" x 24" Wall	111.01		130.16	
W3627	36" x 27" Wall	117.00		137.27	
W301224	30" x 12" x 24" Wall	110.74		137.26	
W301524	30" x 15" x 24" Wall	118.75		146.95	
W301824	30" x 18" x 24" Wall	122.61		151.12	
W361224	36" x 12" x 24" Wall	123.18		152.86	
W361524	36" x 15" x 24" Wall	133.79		165.91	
W361824	36" x 18" x 24" Wall	140.26		173.43	
WM3030	30" x 30" Microwave	97.22		119.44	
DCW2430	24" x 30" Diagonal Corner	118.88		149.23	
DCW2436	24" x 36" Diagonal Corner	150.15		187.47	
DCW2442	24" x 42" Diagonal Corner	158.85		198.14	
UC188424	18" x 84" Pantry	277.04		344.21	
UC189024	18" x 90" Pantry	289.37		360.38	
UC189624	18" x 96" Pantry	304.24		379.02	
UC248424	24" x 84" Pantry	345.38		418.96	
UC249024	24" x 90" Pantry	359.12		436.55	
UC249624	24" x 96" Pantry	384.60		468.05	
LSB36	36" Lazy Susan	458.85		547.05	
BB36	36" Blind Base	195.79		245.73	
BB39	39" Blind Base	202.01		253.53	
BB42	42" Blind Base	204.44		256.03	
BB45	45" Blind Base	233.40		294.10	
BB63	63" Sink Blind Base	341.78		415.14	
SBC60	60" Sink Base	347.23		397.82	
SBC72	72" Sink Base	405.34		469.34	
VA8X48	8" x 48" Valance	29.12		33.78	
FS331	3" x 31" Filler	9.85		9.85	
FS336	3" x 36" Filler	11.73		11.73	
FS342	3" x 42" Filler	13.25		13.25	
FS384	3" x 84" Filler	25.75		25.75	
FS390	3" x 90" Filler	27.27		27.27	
FS396	3" x 96" Filler	28.80		28.80	
DS	Dishwasher End Panel	34.88		43.69	
US84	84" Base End Panel	50.36		50.36	
US90	90" Base End Panel	51.89		51.89	
US96	96" Base End Panel	53.41		53.41	
BS	24" Base End Panel	24.56		24.56	
WS30	30" Wall End Panel	16.25		16.25	
WS36	36" Wall End Panel	18.27		18.27	
WS42	42" Wall End Panel	19.80		19.80	
SM	Screen Moulding	4.35		4.35	
TOEKI	96" Toe Kick	5.22		5.22	

*Fees apply for Card payments **Prices may change without notice

Contact us: 956-461-0682 orderprocess@kapalindustries.com

Store Name

PO#

VANITY PROGRAM



5/8" Melamine Color Samples



Retail 2020

Frameless Finished BATHROOM Cabinets

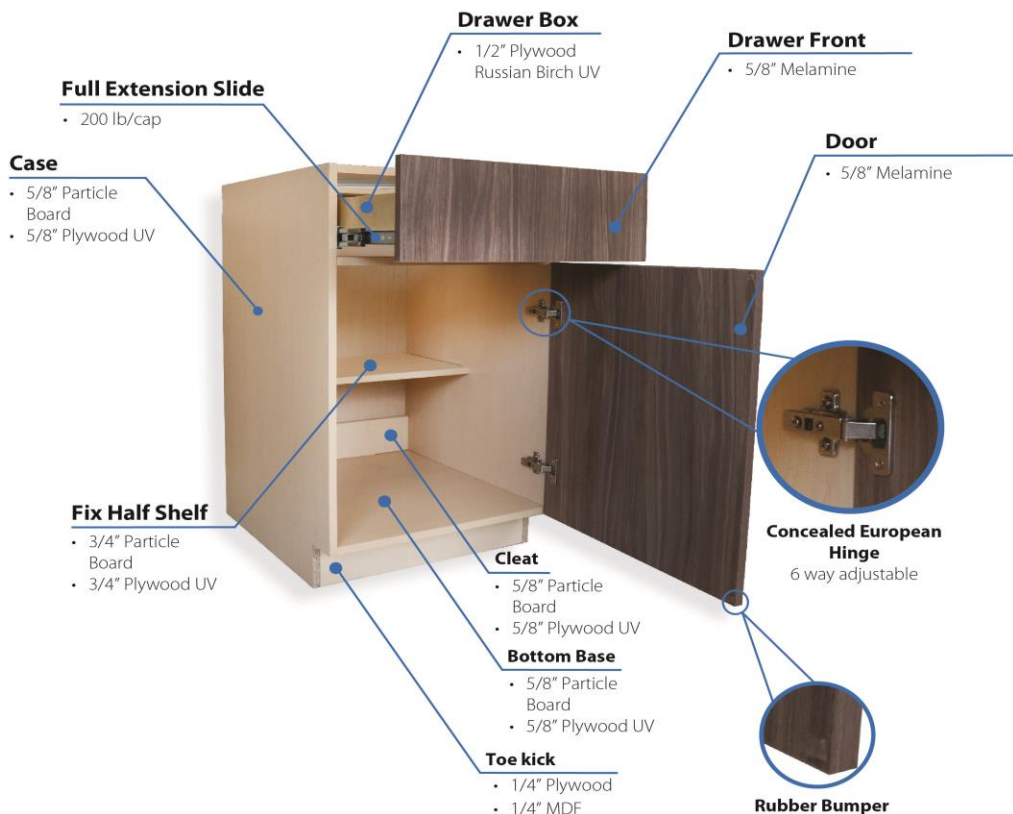
MODEL	DESCRIPTION	PB Case Slab Door		PLY Case Slab Door	
		MF	Q1	MF_PLY	Q2
VA1816	Vanity 18" x 16"	83.06		99.89	
VA2418	Vanity 24" x 18"	115.03		136.63	
VA3018	Vanity 30" x 18"	130.98		155.63	
VA2421	Vanity 24"	120.36		143.84	
VA2721	Vanity 27"	129.05		153.96	
VA3021	Vanity 30"	137.37		164.28	
VA3321	Vanity 33"	145.69		174.60	
VA3621	Vanity 36"	158.03		188.20	
VA3921	Vanity 39"	161.87		192.16	
VA4221	Vanity 42"	163.82		194.23	
VA4521	Vanity 45"	165.77		196.30	
VASD3021	Vanity Side Drawer 30"	232.60		263.77	
VASD3621	Vanity Side Drawer 36"	264.80		299.68	
VASD4221	Vanity Side Drawer 42"	366.37		404.89	
VASD4821	Vanity Side Drawer 48"	389.94		430.58	
VA12213D	Vanity Drawer Base 12"	209.48		228.37	
VA15213D	Vanity Drawer Base 15"	221.42		241.84	

Frameless Finished BATHROOM Cabinets

MODEL	DESCRIPTION	PB Case Slab Door		PLY Case Slab Door	
		MF	Q1	MF_PLY	Q2
VA18213D	Vanity Drawer Base 18"	233.35		255.29	
VA21213D	Vanity Drawer Base 21"	245.28		268.76	
VA24213D	Vanity Drawer Base 24"	257.23		282.24	
VA27213D	Vanity Drawer Base 27"	269.15		295.69	
VA30213D	Vanity Drawer Base 30"	281.09		309.16	
VA33213D	Vanity Drawer Base 33"	291.73		321.00	
VA36213D	Vanity Drawer Base 36"	304.97		336.09	
VA39213D	Vanity Drawer Base 39"	316.90		349.56	
OJ2430	Over John	84.86		99.06	
MC1521	Medicine Cabinet	38.01		42.96	
VA4821	Start Up Bath 48"	302.24		342.28	
VA6021	Start Up Bath 60"	336.11		383.72	
LH1876	Linen 18" x 76"	255.61		315.50	
LH1884	Linen 18" x 84"	279.51		347.05	
FS331	3" x 31" Filler	9.85		9.85	
BS	24" Base End Panel	24.56		24.56	
US84	84" Base End Panel	50.36		50.36	
MTWV1925-SW	Top 19" x 25" Wave 4 SW	44.00			
MTWV1931-SW	Top 19" x 31" Wave 4 SW	53.00			
MTWV1937-SW	Top 19" x 37" Wave 4 SW	64.00			
MTWV2231-SW	Top 22" x 31" Wave 4 SW	73.00			
MTWV2237-SW	Top 22" x 37" Wave 4 SW	79.00			

To Order, please specify Model # and Case material, e.g. To order a 24" Vanity in Particle Board write: "VA2421-MF", in Plywood write: "VA2421-MF_PLY"
Or: Write quantities in the corresponding cell and column • Also Specify Melamine Color

Standard Engineering of Kitchen Base Cabinets Frameless (Melamine Face)



*Fees apply for Card payments **Prices may change without notice

Contact us: 956-461-0682 orderprocess@kapalindustries.com

Store Name _____

PO# _____