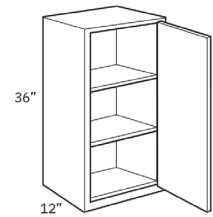




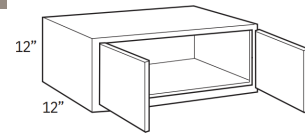
WHITE SHAKER
High Quality Plywood Cabinets
Details Make the Difference
KITCHENS & BATHS

- W0936
- W1236
- W1536
- W1836
- W2136



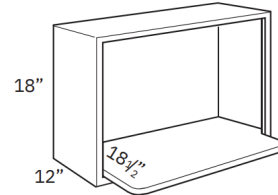
1 Door
Wall 36"H x 12"D

- W3012
- W3612



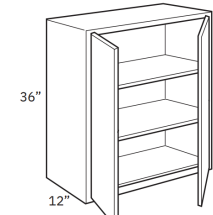
2 Doors
Wall 12"H x 12"D

- MWC3018



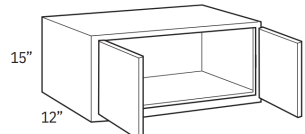
Microwave Wall
18"H x 12"D

- W2436
- W2736
- W3036
- W3336
- W3636



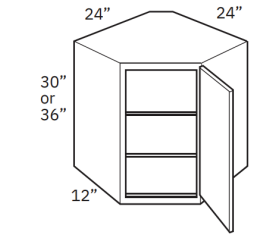
2 Doors
Wall 36"H x 12"D

- W3015
- W3615



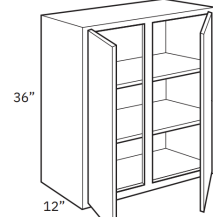
2 Doors
Wall 15"H x 12"D

- DCW2430
- DCW2436



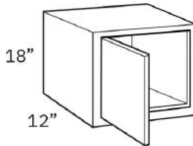
Diagonal Wall
 1 Door
30", 36"H x 12"D

- W4236



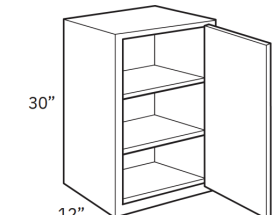
2 Doors
Wall 36"H x 12"D

- W1218
- W1518
- W1818



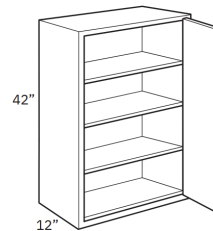
1 Door
Wall 18"H x 12"D

- W0930
- W1230
- W1530
- W1830
- W2130



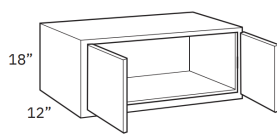
1 Door
Wall 30"H x 12"D

- W0942
- W1242
- W1542
- W1842
- W2142



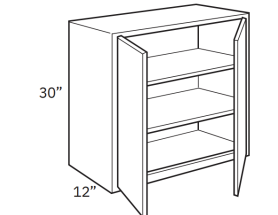
1 Door
Wall 42"H x 12"D

- W2418
- W3018
- W3318
- W3618



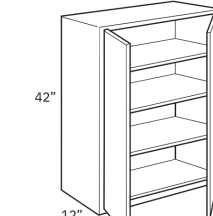
2 Doors
Wall 18"H x 12"D

- W2430
- W2730
- W3030
- W3330
- W3630



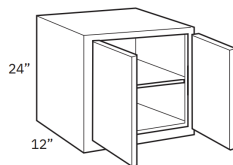
2 Doors
Wall 30"H x 12"D

- W2442
- W2742
- W3042
- W3342
- W3642



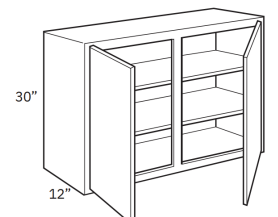
2 Doors
Wall 42"H x 12"D

- W2424
- W3024
- W3324
- W3624



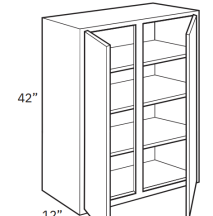
2 Doors
Wall 24"H x 12"D

- W4230



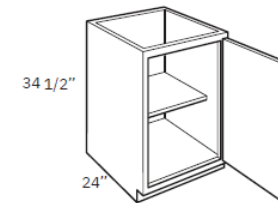
2 Doors
Wall 30"H x 12"D

- W4242



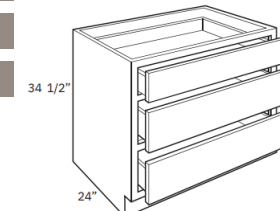
2 Doors
Wall 42"H x 12"D

- B09FD



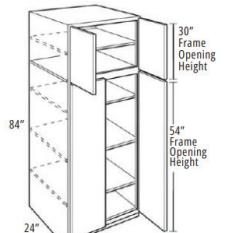
1 Door
Base 34 1/2"H x 24"D

- DB24
- DB30
- DB36



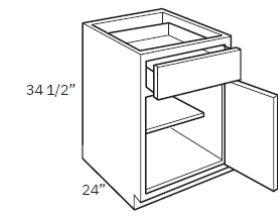
3 Drawers
Base 34 1/2"H x 24"D

- UC248424
- UC249024
- UC249624



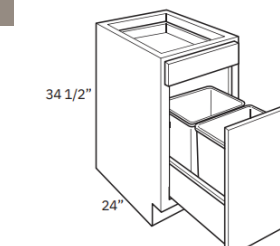
24" Wide Utility
 4 Doors
84"H x 24"D

- B12
- B15
- B18
- B21



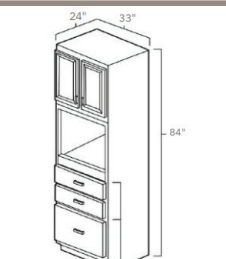
1 Door
 1 Drawer
Base 34 1/2"H x 24"D

- BTC18



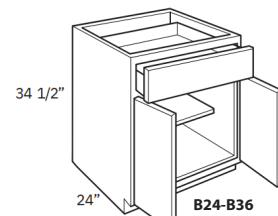
Wastebasket
Base 34 1/2"H x 24"D

- OC3384
- OC3390
- OC3396



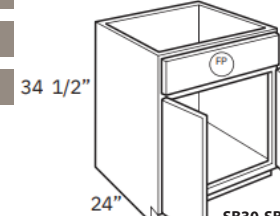
33" Wide Oven
 2 Doors
 3 Drawers
84"H x 24"D

- B24
- B27
- B30
- B33
- B36



2 Doors
 1 Drawer
Base 34 1/2"H x 24"D

- SB30
- SB33
- SB36

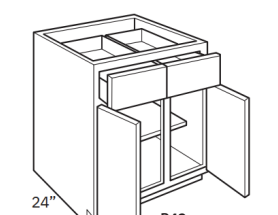


2 Doors
 1 Front
Base 34 1/2"H x 24"D

Stores:

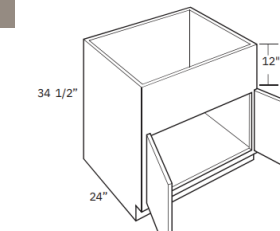
KAPAL DONNA
 2323 E IH 2, Donna
 TX 78537

- B42



2 Doors
 2 Drawers
Base 34 1/2"H x 24"D

- FSB36

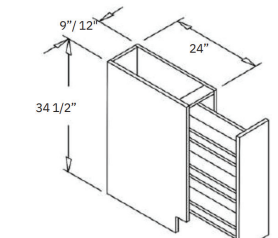


Farm Sink
 2 Doors
Base 34 1/2"H x 24"D

KAPAL EDINBURG

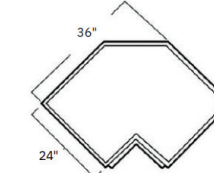
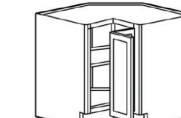
7730, I-69C N Frontage Rd, Edinburg
 TX 78542

- BSR09



Pantry Pullout
Base 34 1/2"H x 24"D

- LSB33
- LSB36

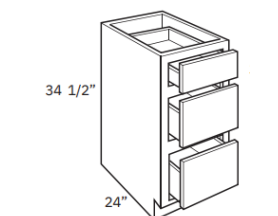


Lazy Susan
 2 Doors
Base 34 1/2"H x 24"D

KAPAL BROWNSVILLE

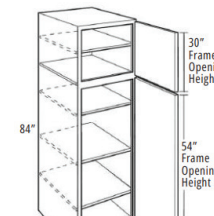
2025 N Minnesota Ave, Brownsville
 TX 78521

- DB12
- DB15
- DB18
- DB21



3 Drawers
Base 34 1/2"H x 24"D

- UC188424
- UC189024
- UC189624



18" Wide Utility
 2 Doors
84"H x 24"D

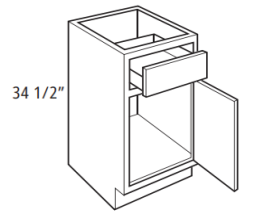
- Kitchens
- Baths
- Accessories





WHITE SHAKER
High Quality Plywood Cabinets
 Details Make the Difference
KITCHENS & BATHS

VD12
 VD15
 VD18

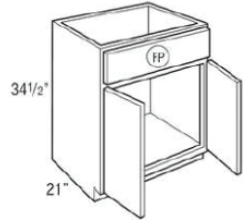


Vanity Sink Base
 1 Door
 1 Drawer
Base 34 1/2\"/>

VA2421

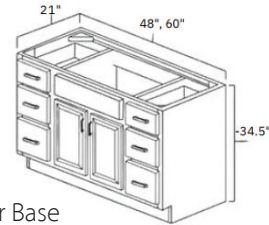
VA3021

VA3621



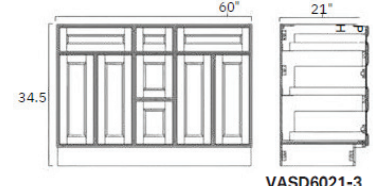
Vanity Sink Base
 2 Doors
 1 Front
Base 34 1/2\"/>

VASD6021



Vanity Sink Drawer Base
Base 34 1/2\"/>

VASD6021-3

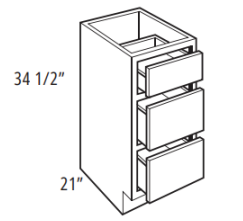


Vanity Sink Drawer Base
Base 34 1/2\"/>

VA12213D

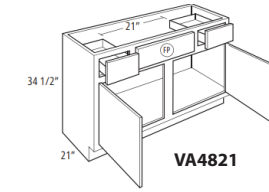
VA15213D

VA18213D



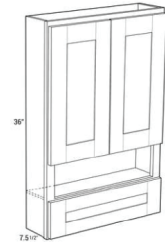
Vanity Drawer Base
 3 Drawers
Base 34 1/2\"/>

VA4821



2 Doors
 2 Drawers
 1 Front
Base 34 1/2\"/>

OJ2436

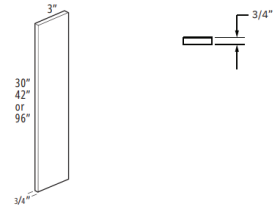


Tank Topper Vanity Wall
 2 Doors
 1 Drawer
36\"/>

FS331

FS342

FS396

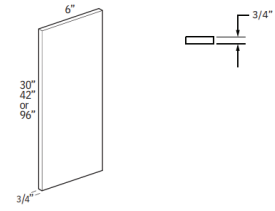


3" Filler
 3/4" Thick

FS631

FS642

FS696

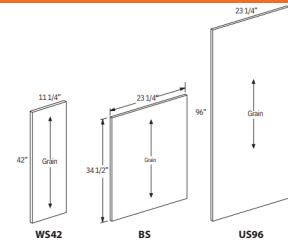


6" Filler
 3/4" Thick

WS42

BS

US96



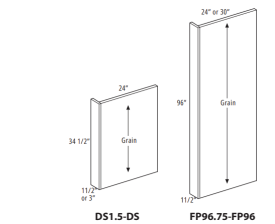
End Panel Skins
 1/4" Thick

DS1.5

DS

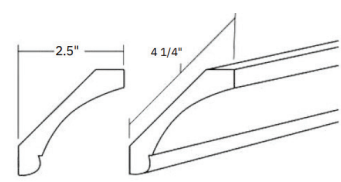
FP96.75

FP96



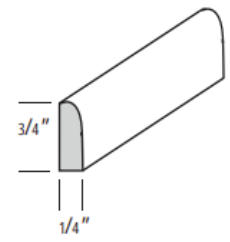
Base & Tall Panels w/ Fillers
 1/2" Thick

LVC



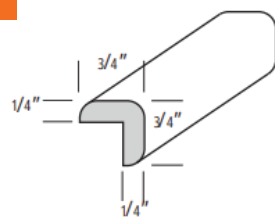
Crown Moulding, Cove Crown

SM8



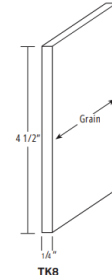
Scribe
 1/4" Thick

OCS8



Corner Moulding
 Outside Corner

TOEKI



Toe Kick
 1/4" Thick

Kitchens

Baths

Accessories



Cabinet Specs

Poplar Shaker Paint Grade

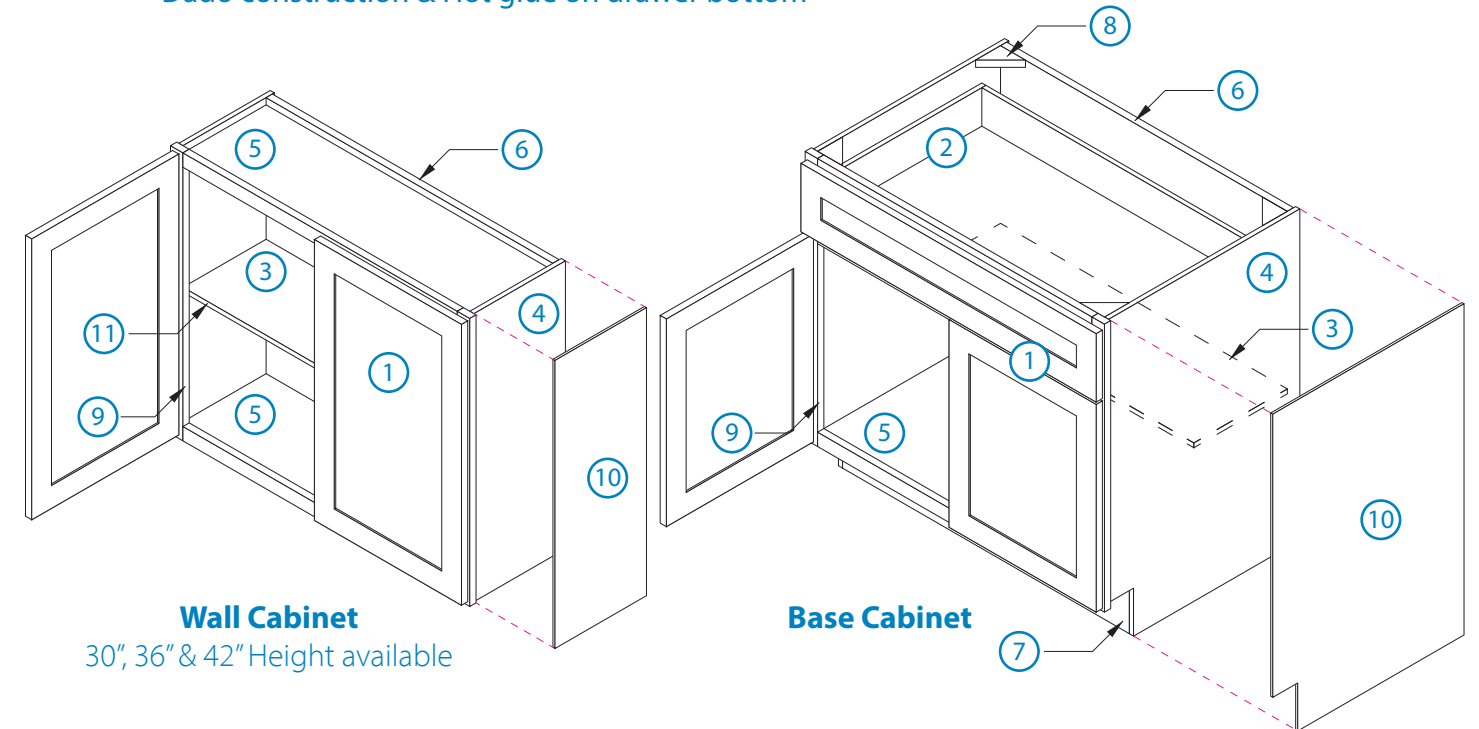


WHITE SHAKER

Faceframe Cabinets Full Overlay - White Shaker - Soft Close

#	Description
1	Faceframe • 3/4" Solid wood Frames, Doors: Engineered HDF Construction
2	Drawer • 3/4" Solid Wood Dovetail, Guides • Soft Close
3	Shelves • 3/4" Plywood Shelves, color Matched
4	Cabinet Sides • 1/2" Plywood, color Matched
5	Cabinet Tops & Bottom • 1/2" Plywood, color Matched
6	Cabinet Backs • 1/2" Plywood, color Matched
7	Toe Kick • 1/4" MDF Paint Grade
8	Corner Blocks • Metal paint grade
9	Hinges • Soft Close
10	End Panels • 1/4" MDF Paint Grade (If apply - sold separately)
11	Edgbanding • 1mm (Only for shelves exposed edges)

* Dado construction & Hot glue on drawer bottom



Wall Cabinet

30", 36" & 42" Height available

Base Cabinet

Kapal • 508 S. Nevada Ave, Weslaco, TX 78596 956-464-3311
 www.kapalindustries.com